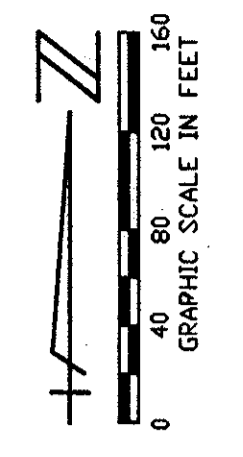
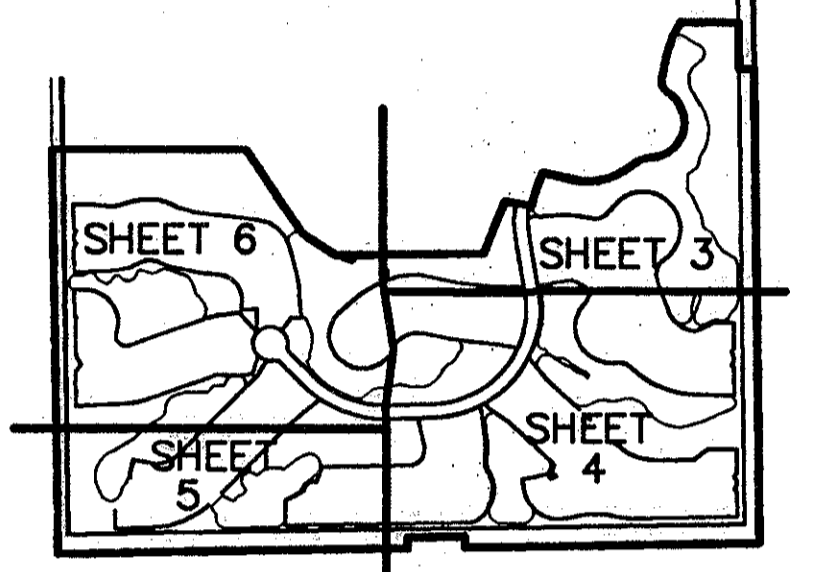


STATE OF FLORIDA
COUNTY OF PALM BEACH
THIS PLAT WAS FILED FOR
RECORD _____ DAY OF _____
AD, 1997 AND DULY RECORDED
IN PLAT BOOK _____ ON PAGES
_____ AND _____
DOROTHY H. WILKEN, CLERK
BY: _____, D.C.

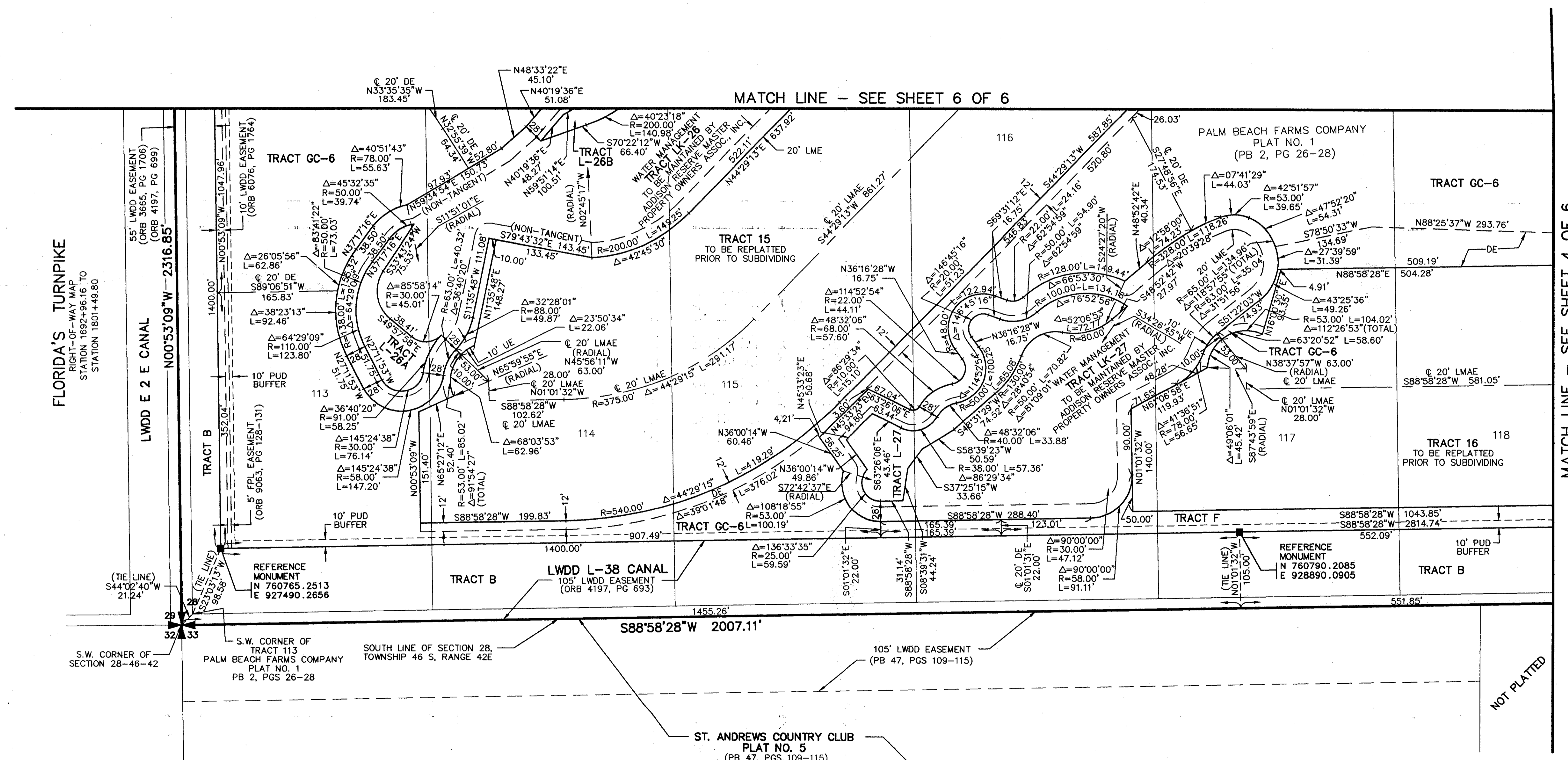


ADDISON RESERVE PLAT FOUR

PART OF GLENEAGLES/POLO CLUB WEST P.U.D.
SITUATE IN SECTION 28, TOWNSHIP 46 SOUTH, RANGE 42 EAST
AND BEING A REPLAT OF A PORTION OF "THE PALM BEACH FARMS COMPANY
PLAT NO. 1" (P.B. 2, PGS. 26-28)
PALM BEACH COUNTY, FLORIDA
OCTOBER, 1996 SHEET 5 OF 6



SHEET LOCATION MAP
(NOT TO SCALE)



MATCH LINE - SEE SHEET 4 OF 6

NOT PLATTED

- LEGEND
- BE BUFFER EASEMENT
 - Δ CENTRAL (DELTA) ANGLE
 - DE DRAINAGE EASEMENT
 - FPL FLORIDA POWER & LIGHT
 - L ARC LENGTH
 - LAE LIMITED ACCESS EASEMENT
 - LE LANDSCAPE EASEMENT
 - LMAE LAKE MAINTENANCE ACCESS EASEMENT
 - LME LAKE MAINTENANCE EASEMENT
 - LWDD LAKE WORTH DRAINAGE DISTRICT
 - (NR) NON-RADIAL
 - ORB OFFICIAL RECORD BOOK
 - PB PLAT BOOK
 - PG(S) PAGE(S)
 - R RADIUS
 - UE UTILITY EASEMENT
 - PERMANENT REFERENCE MONUMENT FOUND PLS# 4763
 - PERMANENT REFERENCE MONUMENT SET PLS# 4763
 - PERMANENT CONTROL POINT SET PLS# 4763
 - ⊙ CENTERLINE

PET. 80-215

79/80

DATE: 10/10/96
DRAWN BY: MARY HANNA CLOFFELTER
CHECKED BY: MARY HANNA CLOFFELTER
DATE: 10/10/96
SCALE: 1"=80'
P.A. NO.: 94182.27
DATE: OCTOBER 1996
DRAWING NO.: 46-42-28-115